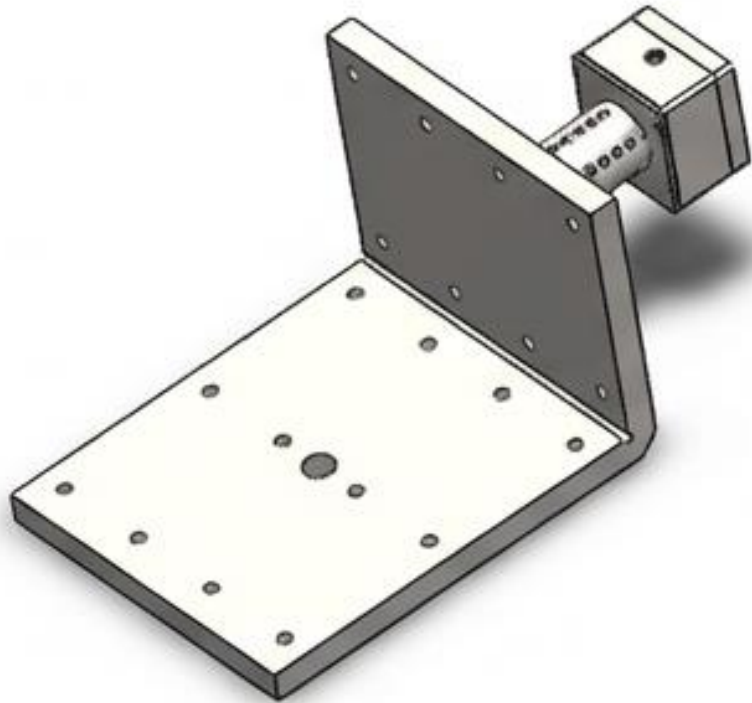


Cast-in heaters are used in circular, square, or rectangular extruder barrels using single or twin screw designs.

Depending on the operating temperatures, they are cast from aluminum, bronze, copper, iron, and other alloys. Bronze and cast iron are generally used for high-temperature densities, while aluminum alloys are used for applications not requiring high watt densities. They can be produced with cooling tubes if desired. Electrical connection is made directly with an aluminum junction box via a vented cooling channel to move heat away from the surface.



Cast-In Heaters

Design Features

- Mounting flange ears or drilled holes
- Aluminum alloys for low-temperature applications
- Machined holes for Thermocouple/PT100
- Terminal box with integrated cooling zone
- Integrated cooling lines
- Machined inner surface

Casting Material & Max. Temperature

Aluminum 443	420°C
Aluminum 319/356	370°C
Bronze	760°C
Cast Iron	480°C